

## VEC Series

### Features

- 4 φ ~ 6.3 φ, 85°C, 2,000 hours assured
- Low Leakage Current Lead free reflow soldering is available
- Designed for surface mounting on high density PC board
- RoHS compliance

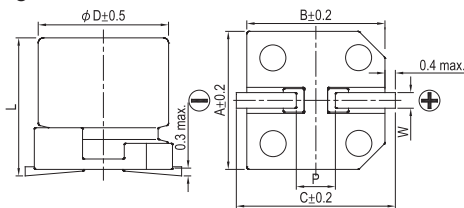


Marking color: Black

### Specifications

Items	Performance																							
Category Temperature Range	-40°C ~ +85°C																							
Capacitance Tolerance	±20% (at 120 Hz, 20°C)																							
Leakage Current (at 20°C)	I = 0.002CV or 0.5 (μA) whichever is greater (after 2 minutes) Where, C = rated capacitance in μF, V = rated DC working voltage in V																							
Tanδ (at 120 Hz, 20°C)	<table border="1"> <thead> <tr> <th>Rated Voltage</th> <th>6.3</th> <th>10</th> <th>16</th> <th>25</th> <th>35</th> <th>50</th> </tr> </thead> <tbody> <tr> <td>Tanδ (max)</td> <td>0.28</td> <td>0.24</td> <td>0.20</td> <td>0.14</td> <td>0.12</td> <td>0.10</td> </tr> </tbody> </table>	Rated Voltage	6.3	10	16	25	35	50	Tanδ (max)	0.28	0.24	0.20	0.14	0.12	0.10									
Rated Voltage	6.3	10	16	25	35	50																		
Tanδ (max)	0.28	0.24	0.20	0.14	0.12	0.10																		
Low Temperature Characteristics (at 120 Hz)	<p>Impedance ratio shall not exceed the values given in the table below.</p> <table border="1"> <thead> <tr> <th colspan="2">Rated Voltage</th> <th>6.3</th> <th>10</th> <th>16</th> <th>25</th> <th>35</th> <th>50</th> </tr> </thead> <tbody> <tr> <td rowspan="2">Impedance Ratio</td> <td>Z(-25°C)/Z(+20°C)</td> <td>3</td> <td>3</td> <td>2</td> <td>2</td> <td>2</td> <td>2</td> </tr> <tr> <td>Z(-40°C)/Z(+20°C)</td> <td>8</td> <td>5</td> <td>4</td> <td>3</td> <td>3</td> <td>3</td> </tr> </tbody> </table>	Rated Voltage		6.3	10	16	25	35	50	Impedance Ratio	Z(-25°C)/Z(+20°C)	3	3	2	2	2	2	Z(-40°C)/Z(+20°C)	8	5	4	3	3	3
Rated Voltage		6.3	10	16	25	35	50																	
Impedance Ratio	Z(-25°C)/Z(+20°C)	3	3	2	2	2	2																	
	Z(-40°C)/Z(+20°C)	8	5	4	3	3	3																	
Endurance	<table border="1"> <thead> <tr> <th>Test Time</th> <th>2,000 Hrs</th> </tr> </thead> <tbody> <tr> <td>Capacitance Change</td> <td>Within ±20% of initial value</td> </tr> <tr> <td>Tanδ</td> <td>Less than 200% of specified value</td> </tr> <tr> <td>Leakage Current</td> <td>Within specified value</td> </tr> </tbody> </table> <p>* The above specifications shall be satisfied when the capacitors are restored to 20°C after the rated voltage applied for 2,000 hours at 85°C.</p>	Test Time	2,000 Hrs	Capacitance Change	Within ±20% of initial value	Tanδ	Less than 200% of specified value	Leakage Current	Within specified value															
Test Time	2,000 Hrs																							
Capacitance Change	Within ±20% of initial value																							
Tanδ	Less than 200% of specified value																							
Leakage Current	Within specified value																							
Shelf Life Test	<table border="1"> <thead> <tr> <th>Test Time</th> <th>1,000 Hrs</th> </tr> </thead> <tbody> <tr> <td>Capacitance Change</td> <td>Within ±20% of initial value</td> </tr> <tr> <td>Tanδ</td> <td>Less than 200% of specified value</td> </tr> <tr> <td>Leakage Current</td> <td>Within specified value</td> </tr> </tbody> </table> <p>* The above specifications shall be satisfied when the capacitors are restored to 20°C after exposing them for 1,000 hours at 85°C without voltage applied.</p>	Test Time	1,000 Hrs	Capacitance Change	Within ±20% of initial value	Tanδ	Less than 200% of specified value	Leakage Current	Within specified value															
Test Time	1,000 Hrs																							
Capacitance Change	Within ±20% of initial value																							
Tanδ	Less than 200% of specified value																							
Leakage Current	Within specified value																							
Ripple Current and Frequency Multipliers	<table border="1"> <thead> <tr> <th>Frequency (Hz)</th> <th>50</th> <th>120</th> <th>1k</th> <th>10k up</th> </tr> </thead> <tbody> <tr> <td>Multiplier</td> <td>0.7</td> <td>1.0</td> <td>1.3</td> <td>1.4</td> </tr> </tbody> </table>	Frequency (Hz)	50	120	1k	10k up	Multiplier	0.7	1.0	1.3	1.4													
Frequency (Hz)	50	120	1k	10k up																				
Multiplier	0.7	1.0	1.3	1.4																				

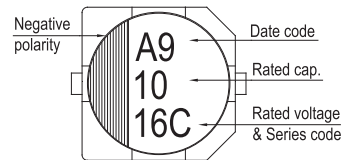
### Diagram of Dimensions



### Lead Spacing and Diameter

φD	L	A	B	C	W	P ± 0.2
4	5.3 ± 0.2	4.3	4.3	5.1	0.5 ~ 0.8	1.0
5	5.3 ± 0.2	5.3	5.3	5.9	0.5 ~ 0.8	1.5
6.3	5.3 ± 0.2	6.6	6.6	7.2	0.5 ~ 0.8	2.0
6.3	7.7 ± 0.3	6.6	6.6	7.2	0.5 ~ 0.8	2.0

### Marking



### Dimension and Permissible Ripple Current

Dimension: φD × L(mm)

Ripple Current: mA/rms at 120 Hz, 85°C

Cap. (μF)	Contents	6.3V (0J)		10V (1A)		16V (1C)		25V (1E)		35V (1V)		50V (1H)	
		φD×L	mA	φD×L	mA	φD×L	mA	φD×L	mA	φD×L	mA	φD×L	mA
1	010											4×5.3	10
2.2	2R2											4×5.3	15
3.3	3R3											4×5.3	19
4.7	4R7							4×5.3	19	4×5.3	20	5×5.3	26
10	100			4×5.3	23	4×5.3	26	5×5.3	32	5×5.3	34	6.3×5.3	44
22	220	4×5.3	31	5×5.3	39	5×5.3	44	6.3×5.3	55	6.3×5.3	59	6.3×5.3	56
33	330	5×5.3	44	5×5.3	48	6.3×5.3	63	6.3×5.3	67	6.3×5.3	71		
47	470	5×5.3	52	6.3×5.3	67	6.3×5.3	75	6.3×5.3	79				
100	101	6.3×5.3	89	6.3×5.3	98	6.3×7.7	103	6.3×7.7	105				
150	151	6.3×7.7	125	6.3×7.7	135								

### Part Numbering System

VEC Series	10μF	±20%	16V	Carrier Tape	4 φ × 5.3L	Pb-free and PET coating case
<b>VEC</b>	<b>100</b>	<b>M</b>	<b>1C</b>	<b>TR</b>	<b>-</b>	<b>0405</b>
Series Name	Capacitance	Capacitance Tolerance	Rated Voltage	Package Type	Terminal Type	Case size
						Lead Wire and Coating Type

Note: For more details, please refer to "Part Numbering System (SMD Type)" on page 15.